

# MONTHLY MEMBERSHIP PROGRESS REPORT

LOCATION ILLINOIS

District 1 J

Results as of: 1/31/2023

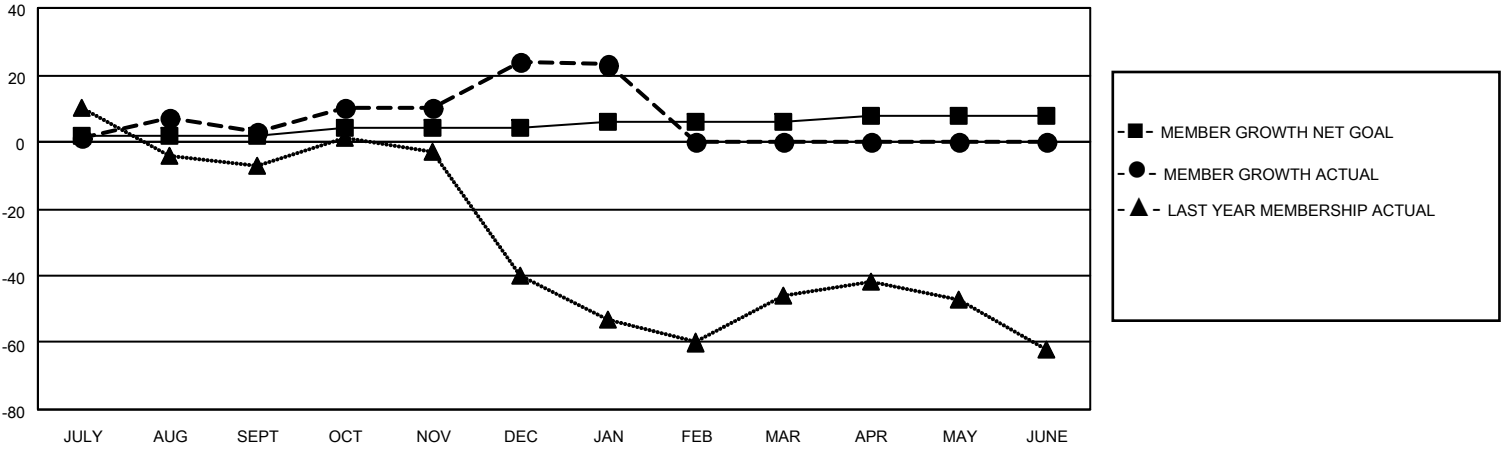
Clubs			
RESULTS FOR 2022-2023			
QUARTER	NEW CLUB GOAL	NEW CLUBS	DROPPED CLUBS
JULY/AUG/SEPT	1	0	0
OCT/NOV/DEC	1	0	0
JAN/FEB/MAR	1	0	0
APR/MAY/JUNE	1	0	0

Members			
RESULTS FOR 2022-2023			
QUARTER	MEMBER GROWTH NET GOAL	MEMBER GROWTH ACTUAL	DROPPED MEMBERS ACTUAL (including transfers)
JULY/AUG/SEPT	2	44	37
OCT/NOV/DEC	2	49	28
JAN/FEB/MAR	2	20	20
APR/MAY/JUNE	2	0	0

**GOALS AND ACTUAL NEW CLUBS CUMULATIVE**



**GOALS AND ACTUAL MEMBERS CUMULATIVE**



DROPPED CLUBS: 0	34 CLUBS OF 56 ADDED 1 OR MORE NEW MEMBERS	<p style="text-align: center;"><u>GENDER DISTRIBUTION</u></p> MALE 1,518 (74.41%) FEMALE 521 (25.54%) NON BINARY 0 (0.00%) PREFER NOT TO ANSWER 1 (0.05%)
<p style="text-align: center;"><u>DROPPED MEMBERS</u></p> DECEASED 14 CLUB CANCELLED 0 OTHER 71 <hr/> TOTAL 85	<a href="#">CLICK HERE FOR CUMULATIVE MEMBERSHIP DATA</a>	TOTAL FAMILY UNIT MEMBERS 193  FAMILY MEMBERS PAYING HALF DUES 101